



## SAILING INSTRUCTIONS

# UNITED 4 SAILING REGATTA 2020 MEDEMBLIK SEPTEMBER 26-27 2020

### Open Dutch Championship for:

29er U19, Cadet, Laser 4.7 U18, Laser Radial U21, Laser Standard U21, Nacra 15 U21, Optimist, Optimist Benjamin U12 and Splash Blue.

The United 4 Sailing Regatta 2020 includes a class event for the 29er, Laser 4.7, Laser Radial, Laser Standard, Nacra 15 and RS-Feva.

U12	born in 2009 or later
U18	born in 2003 or later
U19	born in 2002 or later
U21	born in 2000 or later

the Organizing Authority will be Stichting United 4 Sailing, Stichting Dutch Youth Regatta in conjunction with KZ&RV Hollandia and some other Yacht Clubs under the auspices of the Royal Netherlands Watersports Association.

[DP] denotes a rule for which the penalty is at the discretion of the Protest Committee

[NP] denotes a rule that shall not be grounds for protests by a boat. This changes RRS 60.1(a).

## 1 RULES

- 1.1 The regatta will be governed by the rules as defined in *The Racing Rules of Sailing* (RRS).
- 1.2 The prescriptions of the RNYU will apply. See [http://www.sailing.org/documents/racingrules/national\\_prescriptions.php](http://www.sailing.org/documents/racingrules/national_prescriptions.php)
- 1.3 The "Rules for Championships Sailing, Windsurfing and Kiteboarding" of the RNWA will apply.
- 1.4 Sails shall carry the full sail number and national letters in accordance with the Class Rules, the RRS and comply with RRS Appendix G. With the permission of the Race Committee a boat chartered or loaned for the event may carry a sail number in contravention of her class rules, provided that this number shall not be the sail number of any other boat competing in the same class. This number shall be declared at the time of entry. This changes RRS G3.
- 1.5 If there is a conflict between languages the English text will take precedence.
- 1.6 **[DP]** Every person on board who has its domicile in the Netherlands shall have the appropriate license. The licenses will be checked at registration.
- 1.7 RRS Appendix T applies.
- 1.8 **[DP]** Only for the Nacra 15 class: The use of a helmet (EN1385 standard) is mandatory when afloat.
- 1.9 **[DP]** All competitors and support persons must adhere to the COVID-19 rules of the Dutch government for the for the rules see <https://www.government.nl/topics/coronavirus-covid-19/tackling-new-coronavirus-in-the-netherlands/basic-rules-for-everyone>.



- 1.10 [DP] competitors and support persons shall comply with any reasonable request from an event official. Failure to comply may be misconduct. Reasonable actions by event officials to implement COVID-19 guidance, protocol or legislation, even if they later prove to have been unnecessary, are not improper actions or omissions.
- 1.11 For optimist class only: The penalty for breaking class rule 3.2.6.1(d) will be DPI. The OCN gave permission for this.

## 2 NOTICES TO COMPETITORS

Notices to competitors will be posted on The website of United4 Sailing  
<https://www.united4sailing.org/notice-board/race-documents/>


## 3 CHANGES TO SAILING INSTRUCTIONS

Any change to the sailing instructions will be posted before 08:00 hrs on the day it will take effect, except that any change to the schedule of races will be posted by 20:00 hrs on the day before it will take effect.


## 4 SIGNALS MADE ASHORE

Signals made ashore will be displayed at one of the official signal masts, located close to the regatta office.

**Signal:**                      **Meaning:**

Flag "AP"  All races not started are postponed; do not leave the harbour area.  
When flag AP is displayed ashore, '1 minute' is replaced by 'not less than 60 minutes' for Course Area A and C, for Course Area D not less than 30 minutes. This changes the text under AP in RRS Race Signals.

Flag AP with a Course Area flag (black A, C or D on a white background) means that this signal applies only to that course area.

Flag "D"  Boats shall proceed to their racing area, the warning signal will be made not less than 60 minutes after the display of this flag, for Course Area A and C for Course Area D not less than 30 minutes.

**[DP] [NP]** Boats shall not launch before this flag has been displayed.

When a visual signal is displayed over a course area flag (black A, C or D on a white background), the signal applies only to that course area.

In addition to the class flags as defined in SI 6, the following class flags will be applicable:

Class	Class flag
All Optimist Groups	Flag "O"



# United 4 Sailing



## 5 SCHEDULE OF RACES

### 5.1 Starting sequence:

Course Area A	Optimist Group 1 Optimist Group 2 Optimist Group 3 Cadet
Course Area C	Laser Standard Laser Radial Laser 4.7 Splash Blue
Course Area D	Nacra 15 29er RS-Feva

After the first race of a day, the race committee may change the starting sequence. The start of two or more classes can be combined. In case of combining classes, the class flags will be displayed simultaneously.

**Note:** The combined classes may have to sail different courses.

### 5.2 The schedule of races is as follows:

Classes	No. of scheduled races	
	Saturday	Sunday
Cadet, Laser 4.7, Laser Radial, Laser Standard, Optimist and Splash Blue	4	4
29er, Nacra15 and RS Feva	5	5

5.3 The warning signal for the first race of the first class on Course Area A and C will be 10:55:00 hrs on Saturday

On Course Area D the first warning signal will be 11:25:00 hrs on Saturday.

5.4 The warning signal for the first race of the first class on Course Area A and C will be 10:25:00 hrs on Sunday (this changes the Notice of Race)

On Course Area D the first warning signal will be 09:55:00 hrs on Sunday.

5.5 Each racing day may be used to start postponed or to re-start abandoned races under the restriction that no more than five (5) races will be sailed per day, no more than six (6) races for Course Area D.

5.6 On Saturday one extra race per day may be sailed provided that the regatta will not be more than one (1) race ahead of schedule.

5.7 No warning signal will be made after 1600 on Sunday for Course Area A and C, and 16:30:00 hrs for Course Area D.

5.8 The Optimist fleet will be divided in starting groups of maximum 55 boats.

5.9 a) Initial assignments for the races will be made on a random basis by the OA. Those assignments will be posted no later than 09:00 hrs. on Saturday

b) For Sunday, boats will be reassigned to starting groups, except if on the first day only one race is completed. If all starting groups have completed the same number of races, boats will be reassigned on the basis of their ranks in the series. If not all starting groups have completed the same number of races the series scores for reassignment will be calculated for those races completed by all starting groups.

c) For the Optimist fleet, reassignments will be made on a 1,2,3,3,2,1,1,2,3 etc. basis into different colour groups.



- d) Assignments will be based on the ranking available at 21:00 hrs that day regardless of protests or requests for redress not yet decided. Assignments or re-assignments will be no grounds for redress. This changes RRS 62.1(a).
- e) When the last race of the day is not valid for all starting groups, the race shall be abandoned for all concerned starting groups (this changes RRS 32.1).

## 6 CLASS FLAGS AND RIBBONS

6.1 For the other classes the class flags will be:

Class	Class Flag
29er	Flag BLUE
Cadet	Flag G
Laser 4.7	Flag J
Laser Radial	Flag W
Laser Standard	Flag K
Optimist Group 1	Flag YELLOW
Optimist Group 2	Flag BLUE
Optimist Group 3	Flag RED
Nacra 15	Flag WHITE
RS-Feva	Flag F
Splash Blue	Flag T

- 6.2 **[DP] [NP]** All boats in the Optimist fleet shall display a colored ribbon (corresponding with the color of their class flag).  
For the Optimist fleet this ribbon shall be attached to the top of the sprit.  
The OA will provide the ribbons. Ribbons are available at the slipway. Coaches are requested to collect the ribbons for their team, to avoid congestion of people at the ribbon station.

## 7 RACING AREAS

- 7.1 Appendix 1 shows the location of racing areas and the identification of the race committee signal vessel of each racing area.
- 7.2 The starting area for each course is defined as a rectangle covering the area 100 meters to both windward and leeward of the starting line and 50 meters to both port and starboard of either end of the starting line.

## 8 THE COURSES

- 8.1 The diagrams in Appendix 2 show the courses, including the approximate angles between legs, the order in which marks are to be passed, and the side on which each mark is to be left.
- 8.2 No later than the warning signal, the race committee signal vessel will display the approximate compass bearing of the first leg.
- 8.3 For the Optimist class the course will not be shortened. This changes RRS 32.

## 9 MARKS

- 9.1 The colour and shape of the marks of the racing areas A, C and D will be shown in Appendix 2.
- 9.2 For Course Area C, marks 3 and 4 can be replaced by a gate. Both marks of the gate shall have shape and colour as described in Appendix 2 for the original mark.



- 9.3 A race committee vessel signalling a change of a leg of the course is a mark as provided in SI 11.2.

## 10 THE START

- 10.1 Races will be started by using RRS 26.
- 10.2 On course areas A and C the starting line will be between a pole or mast displaying an orange flag aboard of the race committee signal vessel at the starboard end and a dan buoy displaying an orange flag at the port end of the starting line or a pole with an orange flag at a dinghy at the port side of the starting line.  
A Mark ILM may be used. If a mark ILM is used, the following will apply: boats shall keep the mark ILM to starboard while starting. Mark ILM is also a mark of the starting line as meant in RRS part 2, section C, the introduction.  
On course area D the starting line will be between a pole or mast displaying an orange flag aboard of the race committee signal vessel at the starboard end and a dan buoy displaying an orange flag at the port end of the starting line.
- 10.3 **[NP][DP]** Boats whose warning signal has not been made shall avoid the starting area
- 10.4 A boat starting later than four(4)minutes after her starting signal will be scored DNS without a hearing. This changes RRS A4.1 and A5.
- 10.5 To alert boats that a race or sequence of races will start soon, the orange starting line flag(s) will be displayed (with one sound signal) at least five minutes before a warning signal is made.
- 10.6 If a start under RRS 30.4 should result in a General Recall, sail numbers of the boats identified breaking the black flag rule will be displayed on the race committee signal vessel at starboard end or a committee vessel near the starting vessel.

## 11 CHANGE OF THE NEXT LEG OF THE COURSE

- 11.1 To change the next leg of the course, the race committee will bring the original mark (or the finishing line) to a new position.
- 11.2 Except at a gate, boats shall pass between the race committee vessel signaling the change of the next leg and the nearby mark, leaving the mark to port and the race committee vessel to starboard. This changes RRS 28.

## 12 THE FINISH

The finishing line will be between staffs displaying blue flags on the finishing marks.

## 13 PENALTY SYSTEM

- 13.1 Appendix P of the RRS will apply.  
Add the following sentence to RRS P2.1: When penalized after she has finished, she will be given a scoring penalty of 30% calculated as stated in RRS 44.3(c), but not more than 8 points and not less than 4 points, without a hearing.

### Appendix P is changed as follows:

- P2.2. 'second' is changed to 'second and following'. P2.3 is deleted.
- 13.2 If flag O or R is displayed in combination with one or more class flags, the signal applies only to those classes.
- 13.3 The World Sailing 'Interpretations of Rule 42, Propulsion' are the reference for the protest committee to apply RRS 42. See [INTERPRETATIONS OF RULE 42, PROPULSION](#)
- 13.4 For the 29er, Nacra 15 and RS Feva, class RRS 44.1 and P2.1 are changed, so that the Two-Turn Penalty is replaced by the One-Turn Penalty



## 14 TIME LIMITS AND TARGET TIMES

14.1 Time limits and target times for all classes are as follows:

	Course Area D	All other course areas
<b>Time Limit</b>	60 minutes	75 minutes
<b>Mark 1 time limit</b>	15 minutes	20 minutes
<b>Target time</b>	30 minutes	45 minutes

If no boat has passed Mark 1 within the Mark 1 time limit the race will be abandoned.

- 14.2 Boats failing to finish within 15 minutes after the first boat in her class sails the course and finishes will be scored Did Not Finish without a hearing. This changes RRS 35, A4 and A5.
- 14.3 Failure to meet the target time will not be grounds for redress. This changes RRS 62.1(a).

## 15 PROTESTS AND REQUESTS FOR REDRESS

- 15.1 Protest forms are available at the regatta office. Protests and requests for redress or reopening shall be delivered there within the appropriate time limit.
- 15.2 For each class, the protest time limit is 75 minutes after the last boat has finished the last race of the day. The same protest time limit applies to all protests by the race committee, technical committee and protest committee and to requests for redress. This changes RRS 61.3 and 62.2.
- 15.3 Notices will be posted no later than 30 minutes after the protest time limit to inform competitors of hearings in which they are parties or named as witnesses. Hearings will be held in the protest room, located at the regatta office, as soon as possible after receipt of the protest form.
- 15.4 Notices of protests by the race committee, technical committee or protest committee will be posted to inform boats under RRS 61.1(b).
- 15.5 A list of boats that, under the rules of Appendix P, have acknowledged breaking RRS 42 or have been disqualified by the protest committee will be posted as soon as possible.
- 15.6 On the last scheduled day of the weekend series, a request for redress based on a decision of the protest committee shall be submitted no later than 30 minutes after the decision was published.  
This changes RRS 62.2.

## 16 ARBITRATION

- 16.1 All protests involving only 2 boats and a rule of RRS part 2 or RRS 31, will be subject to arbitration. RRS Appendix T applies.
- 16.2 The 30% scoring penalty will not exceed 15 points. This changes RRS T1(b).
- 16.3 The arbitrator can be a member of the protest committee that hears the protest. This changes RRS 63.3(a) and Appendix T.



## 17 SCORING

### 17.1 UNITED 4 SAILING REGATTA

The Low Point scoring system of RRS Appendix A will apply.

While scoring the separate junior, ladies or other sub-classes, the scores of the normal results will be used.

When less than five races have been completed, a boat's series score will be the total of her race scores, this changes RRS Appendix A2.12.2

### 17.2 Open Dutch Championship

A total of four (4) races are required to be completed to constitute a Open Dutch Championship in the UNITED 4 SAILING REGATTA

Each skipper is scored under his/ her last sail number used in the Open Dutch Championship.

When a skipper sailed with another sail number in the same class, scores are combined.

For the overall score Open Dutch Championship all sailed races count.

Discard is as follows: 1-4 sailed races no discard, 5,6,7,8 or 9 races: 1 discard, followed by one extra discard per five sailed races.

RRS Appendix A9 is changed as follows:

A boat scored BFD, DNC, DNE, DNF, DNS, DSQ, OCS, UFD or RET shall be scored one point more than the number of boats entered in the concerned weekends series, so points are the same as in the weekend series.

## 18 [NP][DP] SAFETY REGULATIONS

18.1 RRS 40 shall apply at all times while afloat. Flag Y will not be displayed. This changes RRS 40 and the Preamble of Part 4.

18.3 Any boat that retires from a race, or does not start a race shall inform the race committee on the water if possible and shall in all cases inform the regatta office as soon as possible.

18.4 Competitors who require assistance should so signify by blowing a whistle or waving the paddle or one arm. The race committee reserves the right to assist competitors who, in the opinion of the race committee, require assistance, regardless of the wishes of the competitor.

18.5 When flag V is displayed on a race committee vessel, all coaches and support boats are permitted to enter the racing area and will cooperate with the race committee in rescue assistance.

## 19 REPLACEMENT OF CREW OR EQUIPMENT

19.1 [NP][DP] Substitution of competitors will not be allowed without prior written approval of the race committee.

19.2 In the event of damage, boats and equipment may only be substituted with the written permission of the race committee. If the damage occurs later than 90 minutes before the first scheduled start on a racing day and before the start of the last race of the day, provisional verbal permission shall be obtained from the protest committee or the race committee and the written permission of the protest committee shall be applied for before the end of the protest time limit at the end of the day in which the substitution takes place.



## **20 EQUIPMENT AND MEASUREMENT CHECKS**

- 20.1 Apart from the stipulations in SI 1.4, the race committee may permit under exceptional circumstances and only upon a written request, a boat to use a sail number other than required by RRS 77 and RRS G.
- 20.2 All competitors, except Nacra 15, shall use only one hull, (set of) sail(s), mast, boom, sprit, centerboard, rudder, which may be identified during measurement.
- 20.3 Nacra 15 competitors, shall use only one set of hulls, set of sails, mast, boom, one set of centerboards and one set of rudders, which may be identified during measurement.
- 20.4 A boat or equipment may be inspected at any time for compliance with the class rules and sailing instructions. On the water, a boat can be instructed by a member of the race committee or the technical committee proceed immediately to a designated area for inspection.

## **21 [NP][DP] HARBOUR MASTERS**

The instructions of the harbour masters, beach masters and site managers must be followed strictly.

## **22 OFFICIAL BOATS**

Official boats will be marked as follows:

- a) Race committee vessels will fly a flag with "RC".
- b) Jury vessels will fly a yellow flag marked "JURY".
- c) United 4 Race management vessels will fly a flag with "U4 LOGO".
- d) Rescue vessels will fly a purple flag marked "RESCUE".
- e) Press vessels will fly a white flag marked "PRESS"

## **23 [NP][DP] SUPPORT BOATS**

- 23.1 During the races there shall be no communication between competitors and support persons. After the first warning signal team support and private boats shall stay well clear of the starting, racing and finishing area until the last boat has finished.
- 23.2 No coach and support boats are permitted in the racing, starting and finishing area from the first warning signal of the first fleet in a race until all boats have finished or the race committee signals a postponement, general recall or abandonment for all races.
- 23.3 Coach and support boats shall stay at least 100 m away from any boat racing.

## **24 [NP][DP] TRASH DISPOSAL**

Trash may be placed aboard support and race committee boats.

## **25 [DP] [NP] BERTHING**

Boats shall be kept in their assigned area in the boat park while ashore

## **26 [DP] [NP] RADIO COMMUNICATION**

Except in an emergency a boat that is racing shall not make voice or data transmissions and shall not receive voice or data communications that is not available to all boats. The VHF 72 shall only be used for safety communication.

## **27 PRIZES**

Prizes will be awarded as written in NoR 16.





## 28 **DISCLAIMER OF LIABILITY**

Participants compete at their own risk and responsibility. See RvW 4 Decision to Race. The Royal Netherlands Watersport Association, the Stichting United4 Sailing, the Stichting Dutch Youth Regatta, the KZ&RV Hollandia and their members, the Race Committee, the protest committee, or any other party involved in the organization of the Regatta cannot be held responsible for any personal or material damage (including but not limited to death, injury, consequential losses) sustained prior to, during or after the races.

## 29 **RIGHTS TO USE NAME AND LIKENESS**

By entering the event competitors accept that they may be photographed and/or videotaped participating in a race and/or using the U4 Sailing facilities and they consent to the taking of such images and to the use, reuse, publication and republication of such images in any media, in conjunction with the competitors name or not, without compensation and without the competitors approval of such images or any use thereof. Video cameras can also be put on boats.

## 30 **INSURANCE**

Each participating boat shall be insured with valid third-party liability insurance with a minimum cover of €1.500.000,00 per incident or the equivalent.

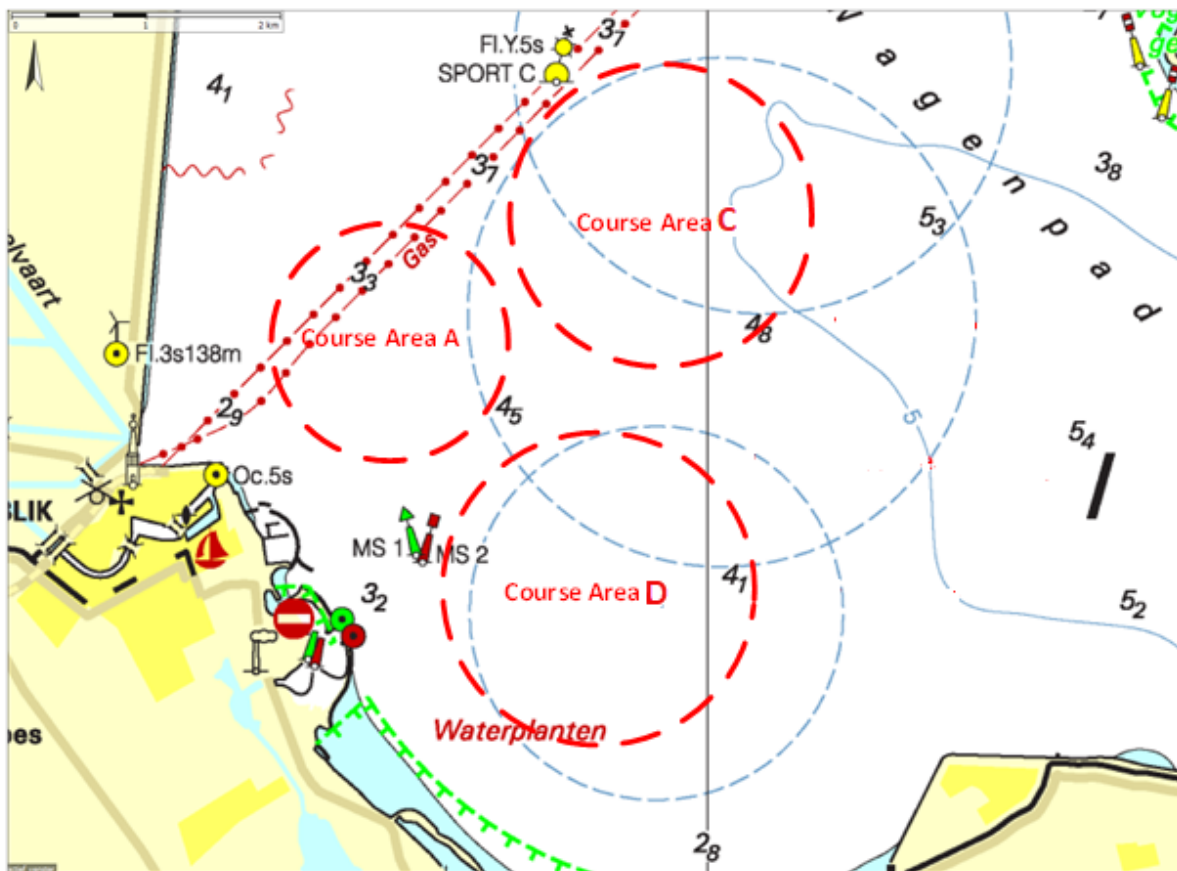
## 31 **ORGANISATION**

Race Officer Racing Area A:	John Borsboom
Race Officer Racing Area C:	Arjen Wildeboer
Race Officer Racing Area D:	Alex Hoeve
The Chairman of the Jury:	Hans Ardon



## Appendix 1 location of racing areas and the identification of the race committee signal vessel

Course area	Coordinates center	Direction to center	Distance to center
Course Area A	052° 47,00000' N 005° 07,80000' O	031°	0,81 Nm / 1,51 km
Course Area C	052° 47,50000' N 005° 09,68550' O	052°	1,97 Nm / 3,65 km
Course Area D	052° 46,00000' N 005° 09,20000' O	103°	1,30 Nm / 2,42 km



### Identification of the race committee signal vessel

- Club flag Course Area A: KZ&RV Hollandia (Blue with red and gold lion) and a white flag with black A
- Club flag Course Area C: Course U4 (White flag with U4 logo) and a white flag with black C
- Club flag Course Area D: Blue banner with Sailservice and a white flag with black D



# United 4 Sailing



## **Appendix 2 The Course and marks**

### **Course Area A (Hollandia)**

Mark 1, 2 and 4 are yellow cylindrical shaped buoys.

Mark 3 (gate) are green cylindrical shaped buoys.

### **Course Area C (Course U4):**

Mark 1, 2, 3, 4 and 5 are yellow triangle shaped buoy with text :“Windesign“.

### **Course Area D (Sailservice):**

Mark 1 is a yellow cylindrical buoy

Mark 1 A is a small yellow (trainings) buoy.

Mark 2 is an orange cylindrical buoy.

Marks 3A and 3B are green cylindrical buoys

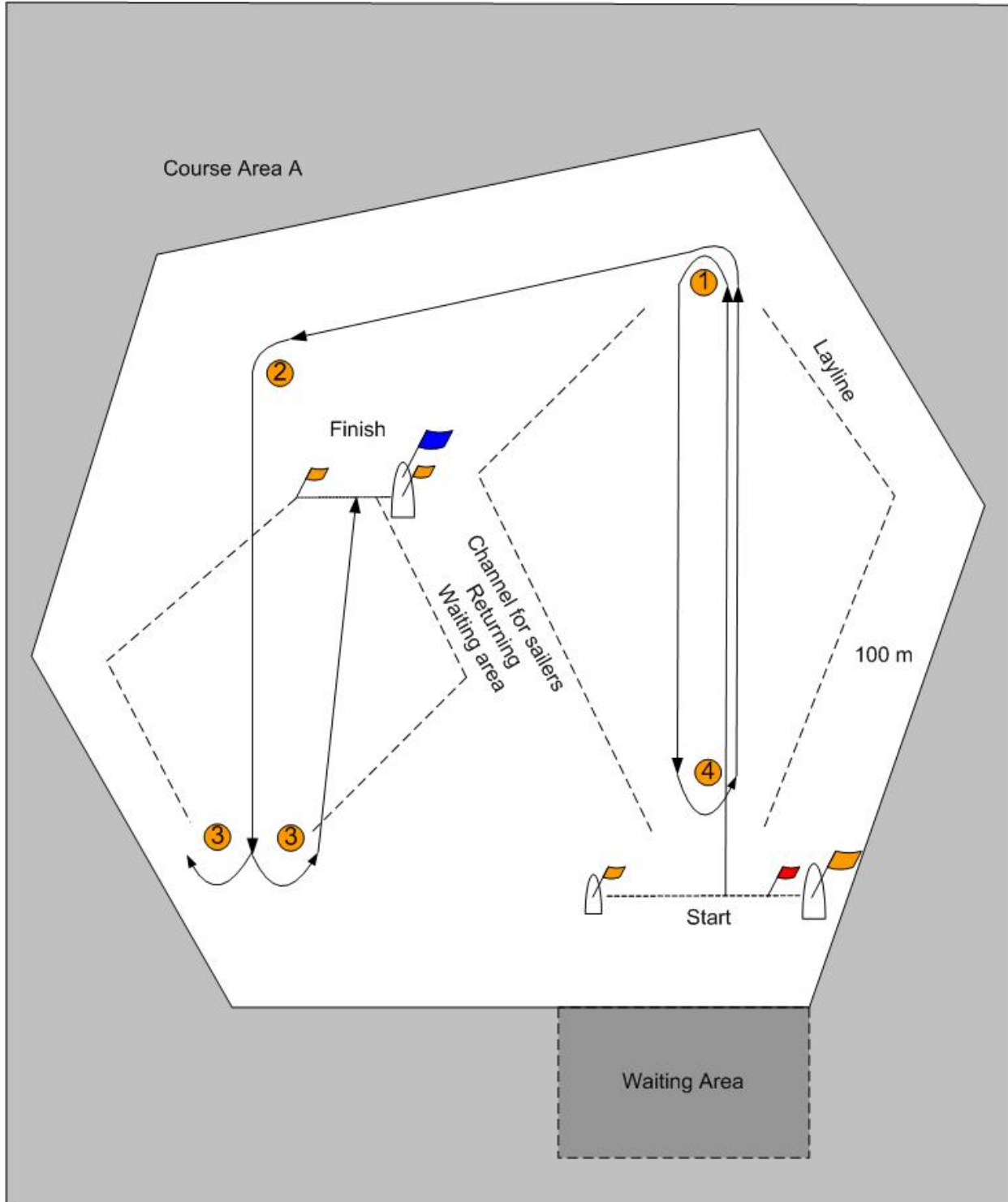


# United 4 Sailing



## Course diagram Course Area A

Classes	Sequence of marks
Optimist Group 1, 2 and 3	Start – 1 – 2 – 3 (gate) – Finish
Cadet	Start – 1 – 4 – 1 – 2 – 3 (gate) – Finish



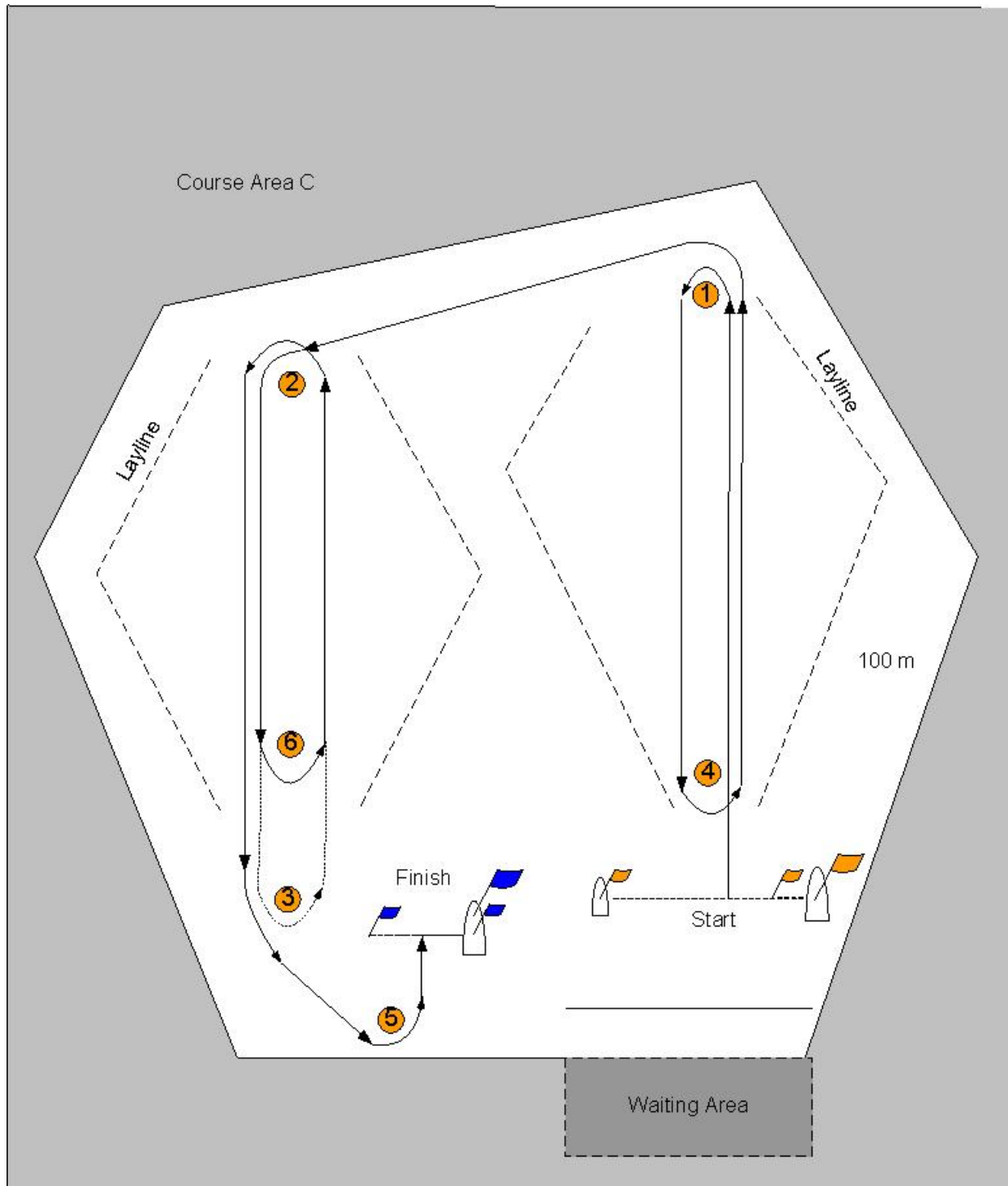


# United 4 Sailing



## Course diagram Course Area C

<b>Classes</b>	<b>Sequence of marks</b>
Laser 4.7	Start – 1 – 6 (gate) – 1 – 2 – 3 – 5 – Finish
Laser Radial	Start – 1 – 2 – 3 – 2 – 3 – 5 – Finish
Laser Standard	Start – 1 – 4 – 1 – 2 – 3 – 5 – Finish
Splash Blue	Start – 1 – 2 – 3 – 2 – 3 – 5 – Finish





# United 4 Sailing



## Course diagram Course Area C

<b>Classes</b>	<b>Sequence of marks</b>
29er	Start-2-3 (gate)-2-3B-finish
Nacra 15	Start-1-1A-3 (gate)-1-1A-3B-finish
RS Feva	Start-2-3 (gate)-2-3B-finish

